

*5

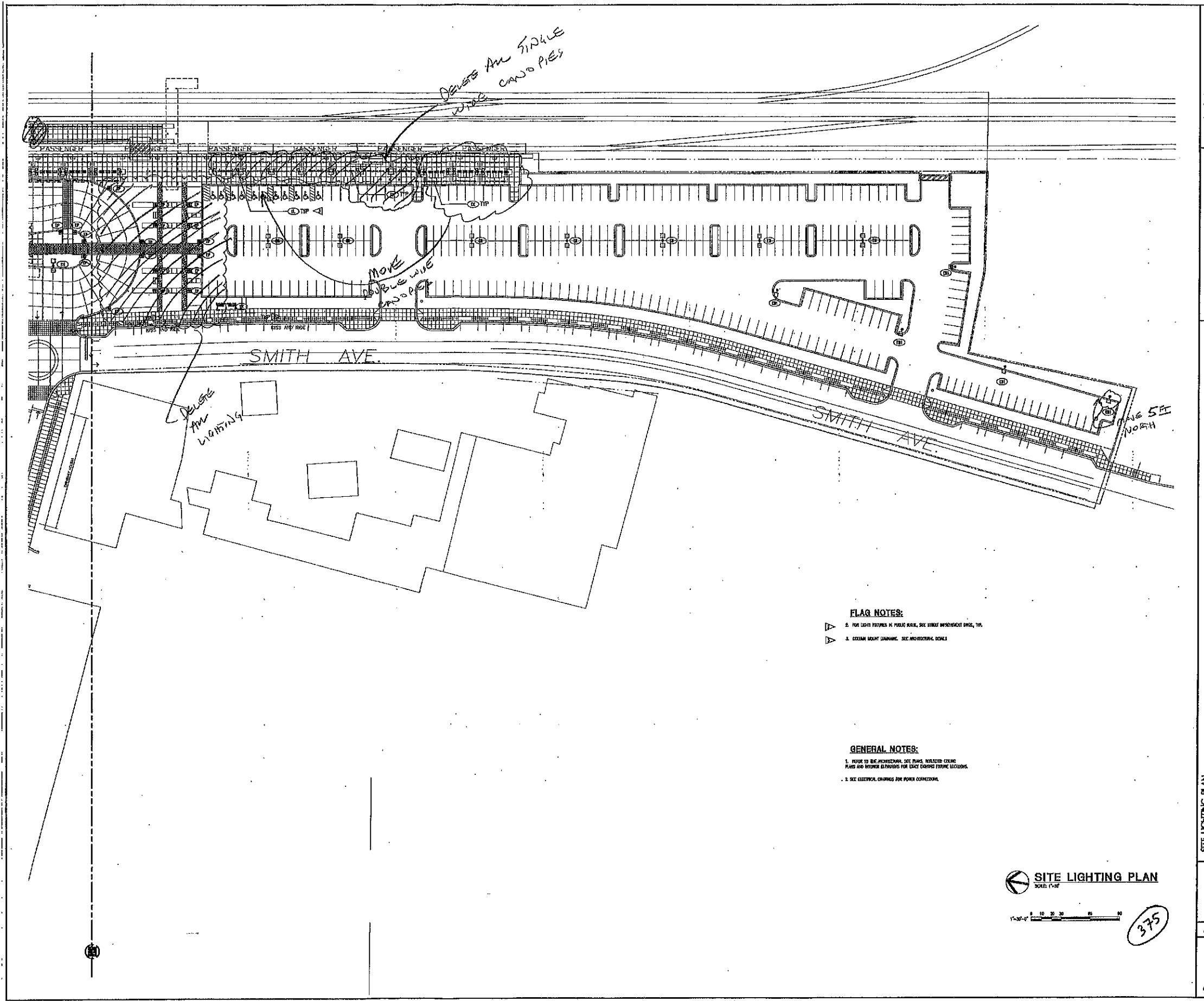
Date: 23 MAY 2000

NORTH
 EVERETT STATION
 EVERETT, WASHINGTON

ARCHITECT/ENGINEER/PLANNING
ZIMMER-GUNSUL-FRASCA PARTNERSHIP
 Seattle Los Angeles Washington, D.C.

SITE LIGHTING PLAN
 SHEET 1 OF 2

Job No. 051229
EL0.01
 of 2 Sheets



FLAG NOTES:

- 1. FOR LIGHT FIXTURES IN PUBLIC AREAS, SEE STREET DEPARTMENT ENGINE, TRM.
- 2. EXAMIN HEIGHT (DIMENSIONS) SEE ARCHITECTURAL RECORDS.

GENERAL NOTES:

- 1. REFER TO THE ARCHITECTURAL, SEE PLANS, RELATED COLOR PLANS AND INTERIOR ELEVATIONS FOR EXACT LIGHTING FIXTURE LOCATIONS.
- 2. SEE ELECTRICAL DRAWINGS FOR POWER CONNECTIONS.

SITE LIGHTING PLAN
SCALE 1/8" = 1'-0"



375

Date: 23 MAY 2000

ZIMMER-GUNSUL-FRASCA PARTNERSHIP
Portland Seattle Los Angeles Washington, D.C.

SITE LIGHTING PLAN
EVERETT STATION
EVERETT, WASHINGTON

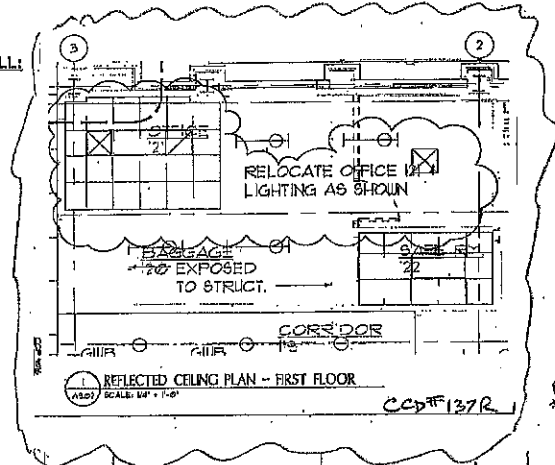
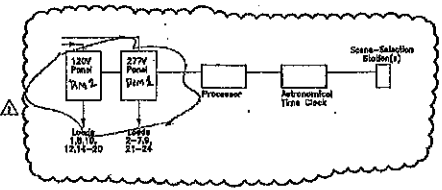
Job No. 02/42/03

Sheet
EL0.02

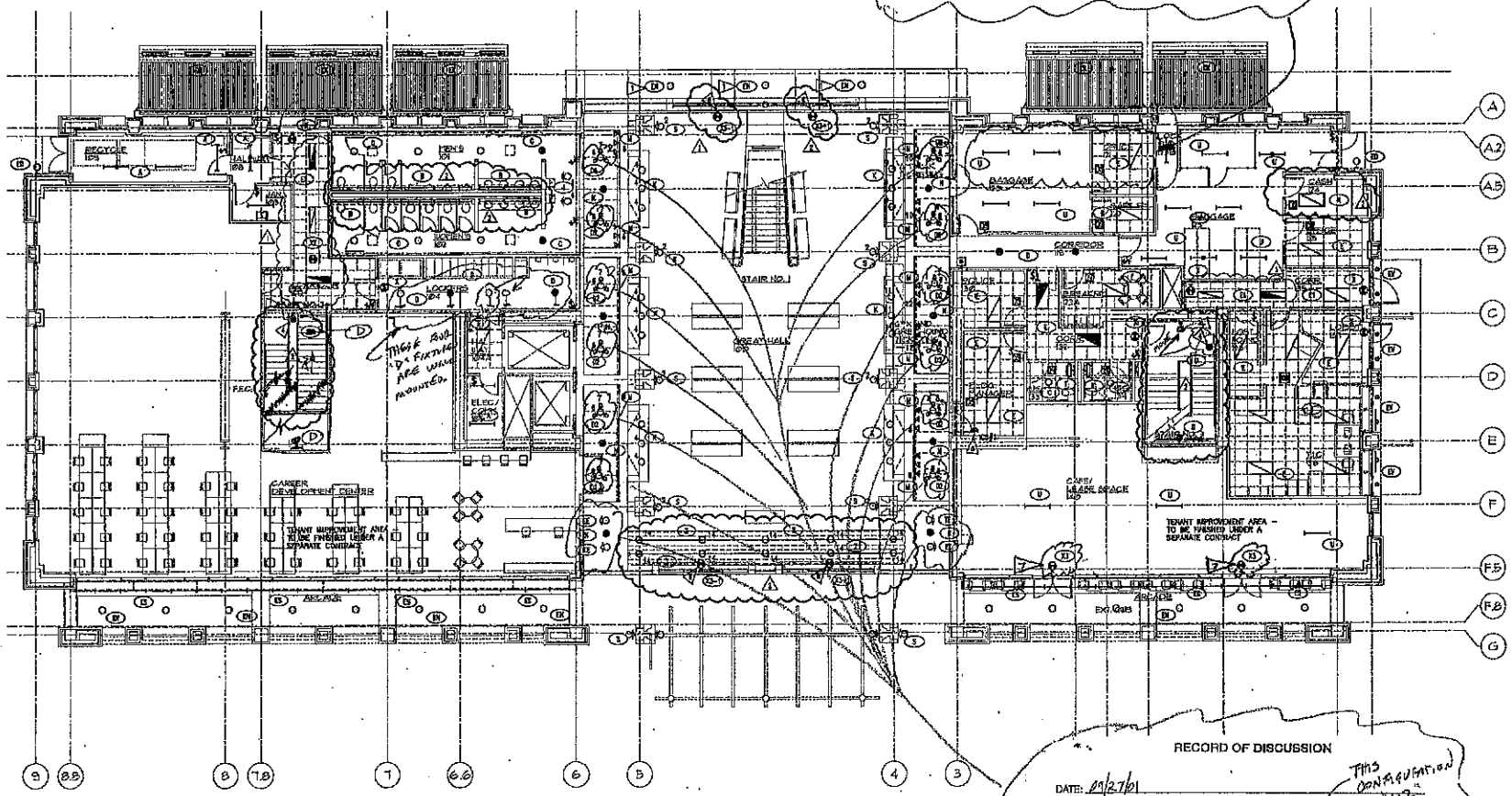
ILLUMINATION CONTROL STATION #1 (ICS#1) GREAT HALL:

Zone	Nomenclature	Type	Load Data	Wallage	VA
1	GL Downlight	FF	SWITCH-RL	126	1200
2	Column Uplight	S	SWITCH-MI	277	1840
3	CT Downlight	O	SWITCH-L-EB	277	50
4	LV Downlight	N, A	DM-UV-140	277	1200
5	Recessed		SWITCH-MI	277	1875
6	1st Fl. Recessed - straight	CC	SWITCH-L-EB	277	600
7	1st Fl. Recessed - square	CC	DM-UV-140	277	1000
8	1st Fl. Recessed - square	M	DM-UV-140	126	480
9	1st Fl. Recessed - square	M	DM-UV-140	277	150
10	1st Fl. Recessed - square	M	DM-UV-140	126	300
11	Optional Access	K	DM-UV-140	277	50
12	Optional Access	M	DM-UV-140	126	300
13	1st Fl. Recessed - square	M	DM-UV-140	126	2000
14	1st Fl. Recessed - square	M	DM-UV-140	126	1500
15	2nd Fl. Recessed - square	M	DM-UV-140	126	750
16	2nd Fl. Recessed - square	M	DM-UV-140	126	1250
17	2nd Fl. Recessed - square	M	DM-UV-140	126	750
18	2nd Fl. Recessed - square	M	DM-UV-140	126	480
19	2nd Fl. Recessed - square	M	DM-UV-140	126	480
20	2nd Fl. Recessed - square	M	DM-UV-140	126	600
21	2nd Fl. Recessed - square	CC	SWITCH-L-EB	277	600
22	2nd Fl. Recessed - square	CC	DM-UV-140	277	1800
23	2nd Fl. Recessed - square	CC	SWITCH-L-EB	277	600
24	2nd Fl. Recessed - square	CC	DM-UV-140	277	1500

Note: Provide the same-nomenclature station.
 Provide load for the zones per power schedule.
 Provide load for the zones per power schedule listed above.



- GENERAL NOTES:**
- FOR ALL EXTERIOR LIGHTING CONTROL VIA EXTERIOR LIGHTING CONTROL PANEL, CONSULTOR'S REFER TO EXTERIOR LIGHTING CONTROL SCHEDULE.
 - ALL OCCUPANCY SENSORS TO BE ADD ALTERNATE ITEM, PROVIDE SENSORS TO BE ADD ALTERNATE ITEM.
 - REFER TO THE ARCHITECTURAL, SITE PLANS, REFLECTED CEILING PLANS AND EXTERIOR ELEVATIONS FOR EXACT LIGHTING FIXTURE LOCATIONS.
- FLAG NOTES:**
- REPLACE TYPE EXH UNLESS DOWNLIGHT OR BUILDING EXTERIOR OF LOWER END OF OVERHANGY BEAMS. COORDINATE WITH ARCHITECTURAL DETAILS.
 - NOT USED
 - NOT USED
 - REMOVE GREAT HALL LIGHTING CONTROL SYSTEM (LUMINA) FROM THE 2ND FLOOR EXISTING LIGHTING CONTROL SYSTEM. PROVIDE ZONES AND CONTROLS PER ICS AS SHOWN.
 - COORDINATE LIGHTING REQUIREMENTS ABOVE BECKET WITH ARCHITECT FROM 10' HEIGHTS.
 - EXIT SIGNS IN CASE AREA TO BE PROVIDED BY T.I. CONTRACTOR.



FIRST FLOOR - LIGHTING PLAN
 SCALE 1/4" = 1'-0"

RECORD OF DISCUSSION

DATE: 2/2/01

PARTICIPANTS:
 Steve Casamayo
 Ken Takahara

WHAT WAS SAID:
 Locate type
 120V & 277V
 Fixtures per sketch

Also: Along "C" lights on 2nd floor - sketch
 distance and
 use of sketch
 on "C" lights on 2nd floor over
 bridge (20' dia)

SIGNED: [Signature]

ENLARGED REFLECTED CEILING PLAN
 SCALE 1/4" = 1'-0"

377